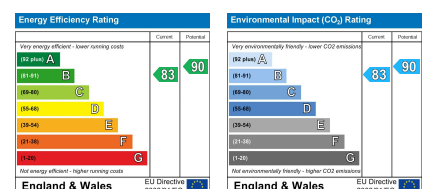


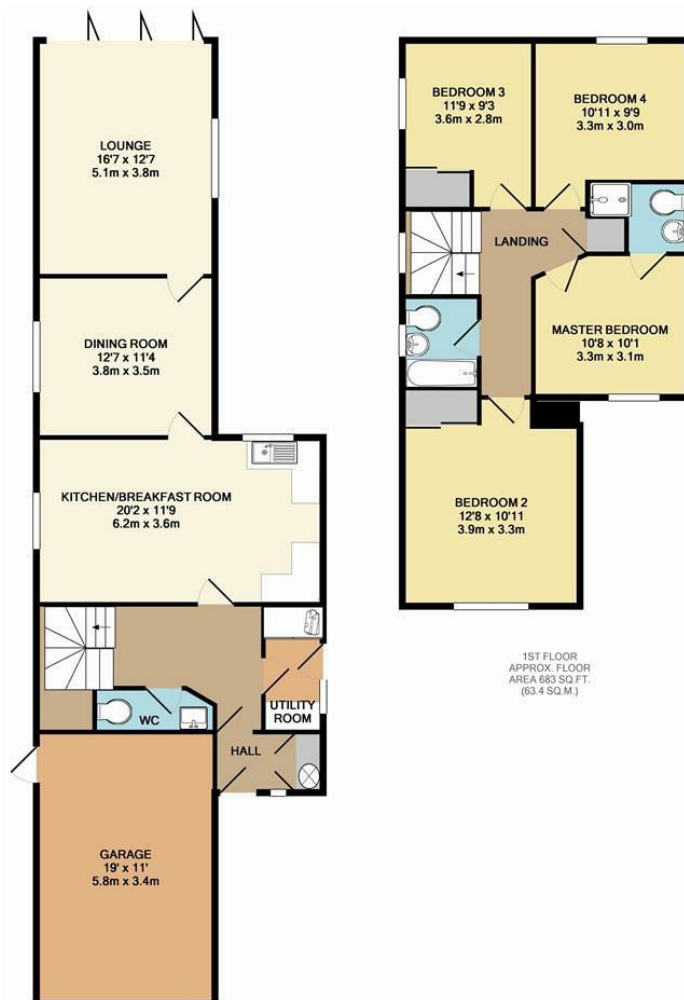


**Kingsway, Mildenhall, Suffolk, IP28 7HR**  
**Rent - £1,750 PCM      Deposit - £2,019**

- SPACIOUS DETACHED HOUSE
- 4 BEDROOMS
- SEPARATE DINING ROOM
- FAMILY BATHROOM, EN SUITE & CLOAKROOM
- LARGE GARDEN, GARAGE & LOTS OF PARKING
- CLOSE TO THE TOWN CENTRE
- GAS HEATING & ENERGY RATING - B
- APPROXIMATE SIZE - 1723 SQ FT.
- PETS CONSIDERED
- AVAILABLE MID DECEMBER







**TOTAL APPROX. FLOOR AREA 1723 SQ.FT. (160.1 SQ.M.)**

Whilst every attempt has been made to ensure the accuracy of the floor plan contained here, measurements of doors, windows, rooms and any other items are approximate and no responsibility is taken for any error, omission, or mis-statement. This plan is for illustrative purposes only and should be used as such by any prospective purchaser. The services, systems and appliances shown have not been tested and no guarantee as to their operability or efficiency can be given.

Made with Metropix ©2014

